

AMPSEAL 16 CONNECTOR SERIES

For Industrial & Commercial Transportation

Terminals and Connectors



Table of Contents

Connectors Performance Specifications	5
Product Documentation	6
Dimensions	7
Configurations	7
Wire Seal Range	7
AMPSEAL 16 High Temperature	8
AMPSEAL 16 Ordering Information	9
Accessories	13
Contacts	18
How To Instructions	25
AMPSEAL 16 Coaxial Connectors	26

MARKETS WE SERVE



ON-HIGHWAY



OFF-HIGHWAY



RECREATIONAL
TRANSPORTATION

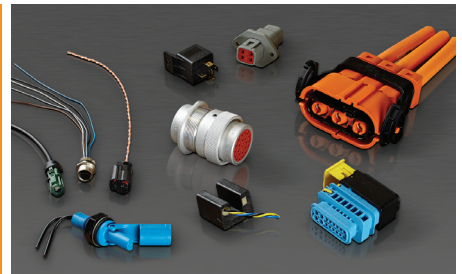
TE Connectivity (TE) Industrial & Commercial Transportation is a reliable provider of solutions for even the harshest environment. With a focus on employee expertise and durable products, we deliver the solutions and support our customers can count on.



2,000+
Employees



10,000+
Customers



20,000+
Different Parts

Years ago, tractors, construction equipment, trucks, and boats had simple electrical systems that might have included electrical starting and a basic lighting package. Today, ECUs, joysticks, fuel-efficient engines, LED lights, and CAN systems are standard equipment. The need to protect sensitive electrical systems from vibration, moisture, dust, dirt, salt, and airborne particles has never been greater. TE Industrial & Commercial Transportation is a leader in supporting today's increasingly complex and sophisticated equipment and applications.

Our comprehensive line of products includes an unparalleled portfolio of rugged sensors, terminals, connectors, relays, and hybrid electric mobility solutions. These solutions are designed to withstand the harshest environmental conditions and to help vehicles operate safer, cleaner, and smarter.

Our solutions adapt to virtually any harsh environment application, including:



Motors and
Gearboxes



ABS/EBS
Brake Units



Telematics
Units



Sensors



Wire-To-Wire
Coupling at
the Chassis



Infotainment
Applications

AMPSEAL 16 CONNECTOR SERIES

The AMPSEAL 16 connector system is targeted for off-road, heavy duty industrial, recreational and agricultural applications. This wire-to-wire and wire-to-device connector line was designed to meet the rigorous demands of an industry that requires the highest standards in performance.

Since the launch of our latest AMPSEAL 16 high temperature connector, this series now features an option for extended on-engine, aftertreatment and powertrain applications, with an increased temperature range of up to 150°C.

AMPSEAL 16 plug and cap housings offer a one-piece design and come fully assembled - reducing installation time and enabling an efficient supply chain.



Benefits

- Optimize applied costs with the Heavy Duty Stamped & Formed (HDSF) size 16 contacts rated up to 13 amps each
- Protect from dust, water, and overspray with IP67, IP68 & IP6K9K (with rear protection)
- Enhanced terminal to connector assembly with integrated Terminal Position Assurance (TPA) ensures contact alignment and retention
- Color and mechanical coding with integrated Connector Position Assurance (CPA) offers a reliable plug and cap housing assembly process.
- Enhance design flexibility with optional backshell and mounting clip accessory items
- Design extended to on-engine, aftertreatment and powertrain applications with new high temperature connectors

Key Industries

AMPSEAL 16 products can be utilized in the truck, bus, construction, agriculture, and special vehicles industries



Truck



Bus



Construction



Agriculture



Special

Applications

AMPSEAL 16 products can be utilized in the following applications



Motors and Gearboxes



ABS/ESC Brake Units



Hydraulic Pumps



Sensors



Wire-To-Wire



Actuators



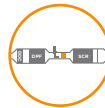
Switches

High Temperature Applications

AMPSEAL 16 products can be utilized in the following applications



On-Engine Control



After treatment



Cooling System



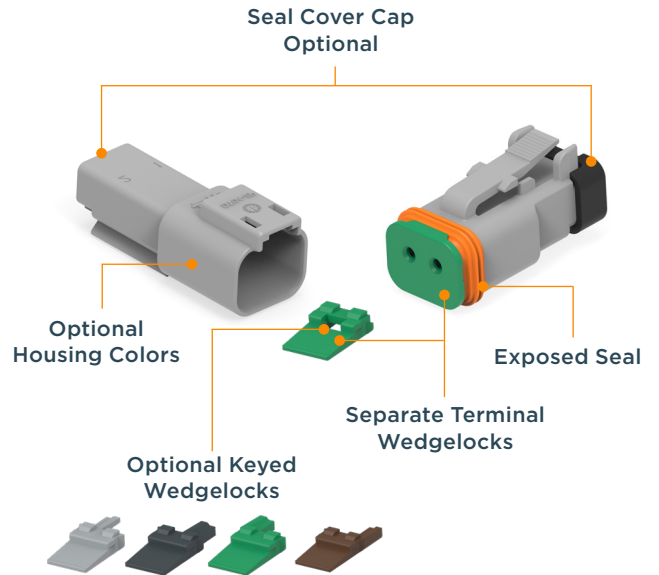
Engine Compartment

COMPARISON TO DEUTSCH DT CONNECTORS

AMPSEAL 16 Connectors



DEUTSCH DT Connectors



PERFORMANCE SPECIFICATIONS

	AMPSEAL 16 Connectors		DEUTSCH DT Connectors
	Standard Temperature	High Temperature	
Current	Up to 13 amps		Up to 13 amps
Temperature	-40°C to 125°C	-40°C to 150°C	-55°C to +125°C
Flammability	UL94 HB	UL94 V-0	UL Recognized. 12 mm Flame test per UL-94
Ingress Protection	IP67, IP68 & IP6K9K (with rear protection)		IP68 & IP6K9K (with rear protection)
Vibration	21G's rms up to 2000 Hz. 20 hours in each of three mutually perpendicular planes.		21G's rms up to 2000 Hz. 20 hours in each of three mutually perpendicular planes.
Keying Coding	-1 = A key (red TPA) -2 = B key (gray TPA) -3 = C Key (yellow TPA) -4 = D Key (green TPA)	-1 = A key (tan TPA) -2 = B key (blue TPA) -3 = C Key (purple TPA) -4 = D Key (orange TPA)	4 keys available for 8 & 12 position. 2-6 position optional keyed wedgelock.

PRODUCT DOCUMENTATION

The AMPSEAL 16 connector system is targeted for off-road, heavy duty industrial, recreational and agricultural applications. This wire-to-wire and wire-to-device connector line was designed to meet the rigorous demands of an industry that requires the highest standards in performance.

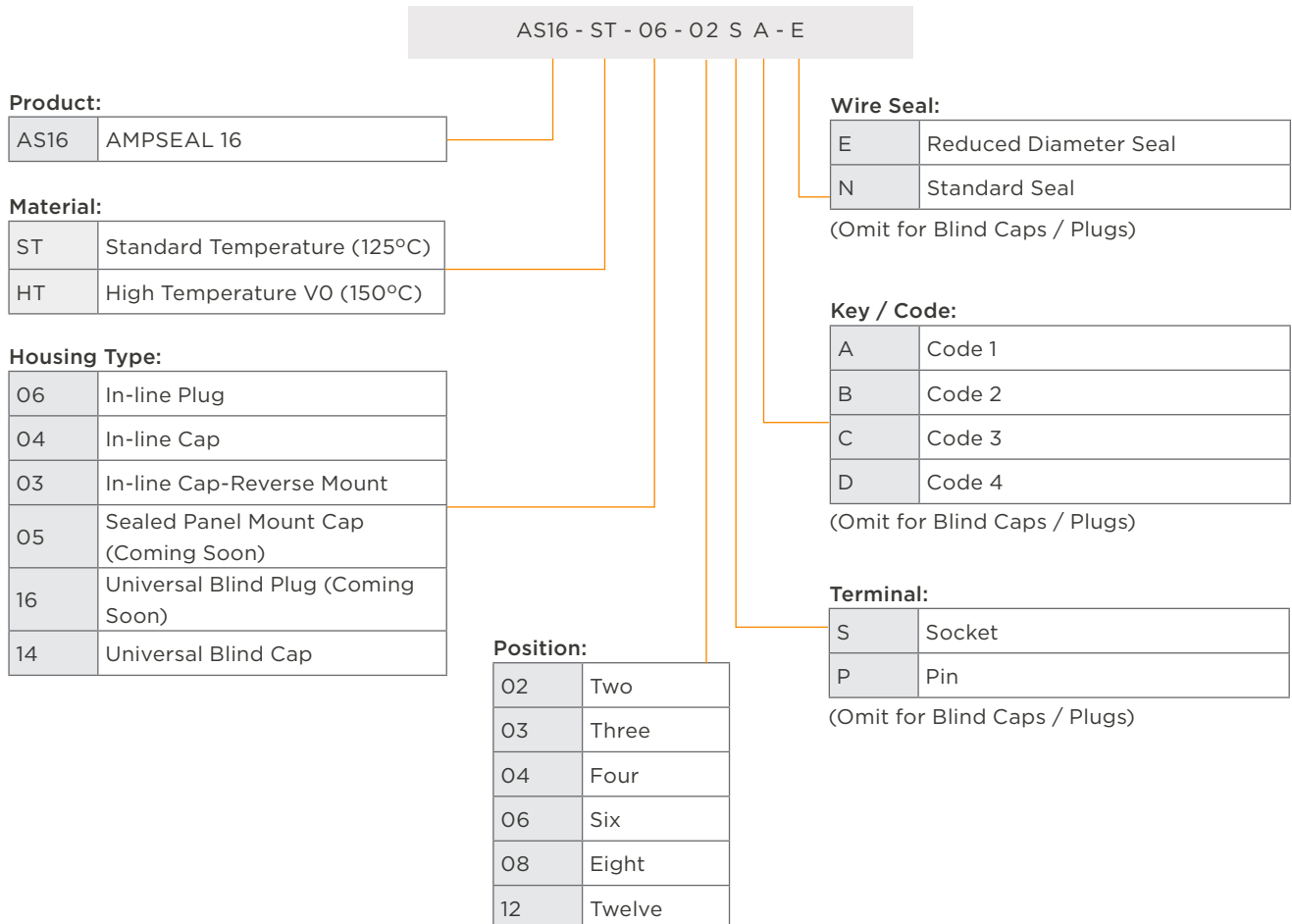
Additional documentation is available for assistance with AMPSEAL 16 products.

The following TE Connectivity document numbers may be helpful:

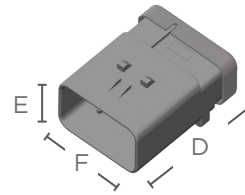
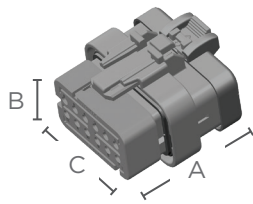
- [108-2184](#) (Product Specification)
- [114-13065](#) (Application Specification)
- [408-8623](#) (Instruction Sheet) 501-708 (Qualification Test Report)
- [114-32363](#) (Application Specifications High Temperature)
- [108-32602](#) (Product Specifications High Temperature)
- [501-32504](#) (Qualification Test Report High Temperature)

ALIAS PART NUMBERING SYSTEM

New alias numbering supports easier product identification, findability and better understanding of the products to order by specifying the product line, the material type and the modifications such as: housing types for connectors, number of positions, keying system, wire seal, etc.. An alias part numbering system is also available for backshells, HDSF terminals and integrated components within this catalog.



AMPSEAL 16 DIMENSIONS



Cavity	AMPSEAL 16 Plug Housing			AMPSEAL 16 Cap Housing		
	Overall Length A	Overall Height B	Overall Width C	Overall Length D	Overall Height E	Overall Width F
2	1.45 (36.75)	.93 (23.5)	.80 (20.33)	1.87 (47.55)	.75 (18.93)	.77 (19.60)
3	1.45 (36.80)	.93 (23.5)	.98 (24.83)	1.87 (47.55)	.75 (19.15)	.95 (24.10)
4	1.44 (36.70)	1.06 (26.8)	1.00 (25.33)	1.87 (47.55)	.88 (22.45)	.97 (24.60)
6	1.44 (36.60)	1.22 (31.0)	1.00 (25.33)	1.87 (47.55)	1.05 (26.65)	.97 (24.60)
8	1.45 (36.80)	1.24 (31.5)	1.15 (29.33)	1.87 (47.55)	1.05 (26.65)	1.13 (28.60)
12	1.45 (36.80)	1.24 (31.5)	1.51 (38.33)	1.87 (47.55)	1.05 (26.65)	1.48 (37.60)

Dimensions are for reference only, see product drawings

AMPSEAL 16 CONFIGURATIONS



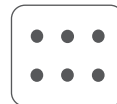
2 Positions
2 size 16



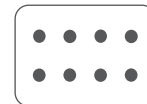
3 Positions
3 size 16



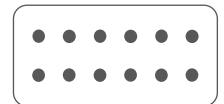
4 Positions
4 size 16



6 Positions
6 size 16



8 Positions
8 size 16



12 Positions
12 size 16

AMPSEAL 16 WIRE SEALING RANGE

The wire sealing range is the recommended outside diameter of the wire insulation required to maintain an environmental seal in the rear connector cavities

Contact Size	Standard seal (N-Seal)	Reduced Seal (E-Seal)
HDSF 16 & Solid Contact 14-20 AWG (2.0-0.5mm ²)	.086-.144 (2.18-3.67)	.051-.100 (1.30-2.54)

AMPSEAL 16 HIGH TEMPERATURE

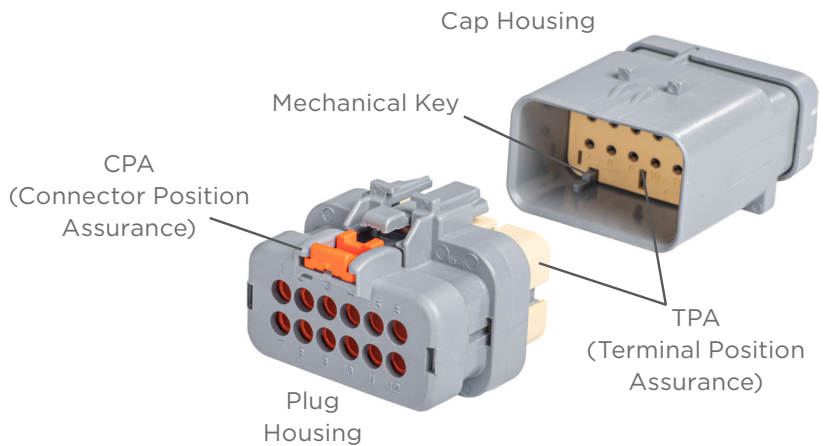


TE's AMPSEAL 16 high temperature connector is the latest addition to the well-established AMPSEAL 16 product portfolio - built to withstand extreme heat conditions in a vast selection of on-engine, aftertreatment and powertrain applications. With a temperature range of up to 150°C (a 20% increase from the 125°C limit of the original), and a higher flammability rating of UL94 V-0, the new AMPSEAL 16 connector delivers the ideal solution for high intensity vehicles and machinery - providing two sealing options for SAE and ISO wires, to further support its extensive functionality.

Differentiated by a new gray colored housing, TE's high temperature variants can be effortlessly identified to aid ease of assembly, with the four discrete color polarization keys also helping to prevent mismatching.

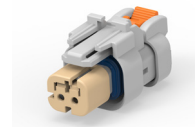
In combination with the fully assembled one-piece design, the new AMPSEAL 16 high temperature connector provides a cost effective, easy-to-build extension of this all-encompassing product line - improving its adaptability for a host of applications.

Plug housing and cap housing TPA colors are mechanically keyed to mate only with identical colors.



ORDERING INFORMATION

AMPSEAL 16 PLUGS



Positions	Wire Seal	Standard Plug (06)		High Temperature Plug (06)	
		Part Number	Alias	Part Number	Alias
2 Pos	STAND DIA	776427-1	AS16-ST-06-02SA-N	2320920-1	AS16-HT-06-02SA-N
		776427-2	AS16-ST-06-02SB-N	2320920-2	AS16-HT-06-02SB-N
		776427-3	AS16-ST-06-02SC-N	2320920-3	AS16-HT-06-02SC-N
		776427-4	AS16-ST-06-02SD-N	2320920-4	AS16-HT-06-02SD-N
	REDUC. DIA	776522-1	AS16-ST-06-02SA-E	2320932-1	AS16-HT-06-02SA-E
		776522-2	AS16-ST-06-02SB-E	2320932-2	AS16-HT-06-02SB-E
		776522-3	AS16-ST-06-02SC-E	2320932-3	AS16-HT-06-02SC-E
		776522-4	AS16-ST-06-02SD-E	2320932-4	AS16-HT-06-02SD-E
3 Pos	STAND DIA	776429-1	AS16-ST-06-03SA-N	2320921-1	AS16-HT-06-03SA-N
		776429-2	AS16-ST-06-03SB-N	2320921-2	AS16-HT-06-03SB-N
		776429-3	AS16-ST-06-03SC-N	2320921-3	AS16-HT-06-03SC-N
		776429-4	AS16-ST-06-03SD-N	2320921-4	AS16-HT-06-03SD-N
	REDUC. DIA	776523-1	AS16-ST-06-03SA-E	2320933-1	AS16-HT-06-03SA-E
		776523-2	AS16-ST-06-03SB-E	2320933-2	AS16-HT-06-03SB-E
		776523-3	AS16-ST-06-03SC-E	2320933-3	AS16-HT-06-03SC-E
		776523-4	AS16-ST-06-03SD-E	2320933-4	AS16-HT-06-03SD-E
4 Pos	STAND DIA	776487-1	AS16-ST-06-04SA-N	2320922-1	AS16-HT-06-04SA-N
		776487-2	AS16-ST-06-04SB-N	2320922-2	AS16-HT-06-04SB-N
		776487-3	AS16-ST-06-04SC-N	2320922-3	AS16-HT-06-04SC-N
		776487-4	AS16-ST-06-04SD-N	2320922-4	AS16-HT-06-04SD-N
	REDUC. DIA	776524-1	AS16-ST-06-04SA-E	2320934-1	AS16-HT-06-04SA-E
		776524-2	AS16-ST-06-04SB-E	2320934-2	AS16-HT-06-04SB-E
		776524-3	AS16-ST-06-04SC-E	2320934-3	AS16-HT-06-04SC-E
		776524-4	AS16-ST-06-04SD-E	2320934-4	AS16-HT-06-04SD-E
6 Pos	STAND DIA	776433-1	AS16-ST-06-06SA-N	2320923-1	AS16-HT-06-06SA-N
		776433-2	AS16-ST-06-06SB-N	2320923-2	AS16-HT-06-06SB-N
		776433-3	AS16-ST-06-06SC-N	2320923-3	AS16-HT-06-06SC-N
	REDUC. DIA	776531-1	AS16-ST-06-06SA-E	2320935-1	AS16-HT-06-06SA-E
		776531-2	AS16-ST-06-06SB-E	2320935-2	AS16-HT-06-06SB-E
		776531-3	AS16-ST-06-06SC-E	2320935-3	AS16-HT-06-06SC-E
8 Pos	STAND DIA	776494-1	AS16-ST-06-08SA-N	2320924-1	AS16-HT-06-08SA-N
		776494-2	AS16-ST-06-08SB-N	2320924-2	AS16-HT-06-08SB-N
		776494-3	AS16-ST-06-08SC-N	2320924-3	AS16-HT-06-08SC-N
		776494-4	AS16-ST-06-08SD-N	2320924-4	AS16-HT-06-08SD-N
	REDUC. DIA	776532-1	AS16-ST-06-08SA-E	2320936-1	AS16-HT-06-08SA-E
		776532-2	AS16-ST-06-08SB-E	2320936-2	AS16-HT-06-08SB-E
		776532-3	AS16-ST-06-08SC-E	2320936-3	AS16-HT-06-08SC-E
		776532-4	AS16-ST-06-08SD-E	2320936-4	AS16-HT-06-08SD-E
12 Pos	STAND DIA	776437-1	AS16-ST-06-12SA-N	2320925-1	AS16-HT-06-12SA-N
		776437-2	AS16-ST-06-12SB-N	2320925-2	AS16-HT-06-12SB-N
		776437-3	AS16-ST-06-12SC-N	2320925-3	AS16-HT-06-12SC-N
		776437-4	AS16-ST-06-12SD-N	2320925-4	AS16-HT-06-12SD-N
	REDUC. DIA	776533-1	AS16-ST-06-12SA-E	2320937-1	AS16-HT-06-12SA-E
		776533-2	AS16-ST-06-12SB-E	2320937-2	AS16-HT-06-12SB-E
		776533-3	AS16-ST-06-12SC-E	2320937-3	AS16-HT-06-12SC-E
		776533-4	AS16-ST-06-12SD-E	2320937-4	AS16-HT-06-12SD-E

AMPSEAL 16 CONNECTOR SERIES

Terminals and Connectors

IN-LINE CAPS



Positions	Wire Seal	Standard In-Line Cap (04)		High Temperature In-Line Cap (04)		Standard In-Line Cap (03) (Reverse Bracket)	
		Part Number	Alias	Part Number	Alias	Part Number	Alias
2 Pos	STAND DIA	776428-1	AS16-ST-04-02PA-N	2320913-1	AS16-HT-04-02PA-N	1717672-1	AS16-ST-03-02PA-N
		776428-2	AS16-ST-04-02PB-N	2320913-2	AS16-HT-04-02PB-N	1717672-2	AS16-ST-03-02PB-N
		776428-3	AS16-ST-04-02PC-N	2320913-3	AS16-HT-04-02PC-N	1717672-3	AS16-ST-03-02PC-N
		776428-4	AS16-ST-04-02PD-N	2320913-4	AS16-HT-04-02PD-N	1717672-4	AS16-ST-03-02PD-N
	REDUC. DIA	776534-1	AS16-ST-04-02PA-E	2320926-1	AS16-HT-04-02PA-E	1871412-1	AS16-ST-03-02PA-E
		776534-2	AS16-ST-04-02PB-E	2320926-2	AS16-HT-04-02PB-E	1871412-2	AS16-ST-03-02PB-E
		776534-3	AS16-ST-04-02PC-E	2320926-3	AS16-HT-04-02PC-E	1871412-3	AS16-ST-03-02PC-E
		776534-4	AS16-ST-04-02PD-E	2320926-4	AS16-HT-04-02PD-E	1871412-4	AS16-ST-03-02PD-E
3 Pos	STAND DIA	776430-1	AS16-ST-04-03PA-N	2320914-1	AS16-HT-04-03PA-N	1717673-1	AS16-ST-03-03PA-N
		776430-2	AS16-ST-04-03PB-N	2320914-2	AS16-HT-04-03PB-N	1717673-2	AS16-ST-03-03PB-N
		776430-3	AS16-ST-04-03PC-N	2320914-3	AS16-HT-04-03PC-N	1717673-3	AS16-ST-03-03PC-N
		776430-4	AS16-ST-04-03PD-N	2320914-4	AS16-HT-04-03PD-N	1717673-4	AS16-ST-03-03PD-N
	REDUC. DIA	776535-1	AS16-ST-04-03PA-E	2320927-1	AS16-HT-04-03PA-E	1871413-1	AS16-ST-03-03PA-E
		776535-2	AS16-ST-04-03PB-E	2320927-2	AS16-HT-04-03PB-E	1871413-2	AS16-ST-03-03PB-E
		776535-3	AS16-ST-04-03PC-E	2320927-3	AS16-HT-04-03PC-E	1871413-3	AS16-ST-03-03PC-E
		776535-4	AS16-ST-04-03PD-E	2320927-4	AS16-HT-04-03PD-E	1871413-4	AS16-ST-03-03PD-E
4 Pos	STAND DIA	776488-1	AS16-ST-04-04PA-N	2320915-1	AS16-HT-04-04PA-N	1717674-1	AS16-ST-03-04PA-N
		776488-2	AS16-ST-04-04PB-N	2320915-2	AS16-HT-04-04PB-N	1717674-2	AS16-ST-03-04PB-N
		776488-3	AS16-ST-04-04PC-N	2320915-3	AS16-HT-04-04PC-N	1717674-3	AS16-ST-03-04PC-N
		776488-4	AS16-ST-04-04PD-N	2320915-4	AS16-HT-04-04PD-N	1717674-4	AS16-ST-03-04PB-N
	REDUC. DIA	776536-1	AS16-ST-04-04PA-E	2320928-1	AS16-HT-04-04PA-E	1871414-1	AS16-ST-03-04PA-E
		776536-2	AS16-ST-04-04PB-E	2320928-2	AS16-HT-04-04PB-E	1871414-2	AS16-ST-03-04PB-E
		776536-3	AS16-ST-04-04PC-E	2320928-3	AS16-HT-04-04PC-E	1871414-3	AS16-ST-03-04PC-E
		776536-4	AS16-ST-04-04PD-E	2320928-4	AS16-HT-04-04PD-E	1871414-4	AS16-ST-03-04PD-E
6 Pos	STAND DIA	776434-1	AS16-ST-04-06PA-N	2320916-1	AS16-HT-04-06PA-N	1717675-1	AS16-ST-03-06PA-N
		776434-2	AS16-ST-04-06PB-N	2320916-2	AS16-HT-04-06PB-N	1717675-2	AS16-ST-03-06PB-N
		776434-3	AS16-ST-04-06PC-N	2320916-3	AS16-HT-04-06PC-N	1717675-3	AS16-ST-03-06PC-N
	REDUC. DIA	776537-1	AS16-ST-04-06PA-E	2320929-1	AS16-HT-04-06PA-E	1717975-1	AS16-ST-03-06PA-E
		776537-2	AS16-ST-04-06PB-E	2320929-2	AS16-HT-04-06PB-E	1717975-2	AS16-ST-03-06PB-E
		776537-3	AS16-ST-04-06PC-E	2320929-3	AS16-HT-04-06PC-E	1717975-3	AS16-ST-03-06PC-E
8 Pos	STAND DIA	776495-1	AS16-ST-04-08PA-N	2320917-1	AS16-HT-04-08PA-N	1717676-1	AS16-ST-03-08PA-N
		776495-2	AS16-ST-04-08PB-N	2320917-2	AS16-HT-04-08PB-N	1717676-2	AS16-ST-03-08PB-N
		776495-3	AS16-ST-04-08PC-N	2320917-3	AS16-HT-04-08PC-N	1717676-3	AS16-ST-03-08PC-N
		776495-4	AS16-ST-04-08PD-N	2320917-4	AS16-HT-04-08PD-N	1717676-4	AS16-ST-03-08PD-N
	REDUC. DIA	776538-1	AS16-ST-04-08PA-E	2320930-1	AS16-HT-04-08PA-E	1871415-1	AS16-ST-03-08PA-E
		776538-2	AS16-ST-04-08PB-E	2320930-2	AS16-HT-04-08PB-E	1871415-2	AS16-ST-03-08PB-E
		776538-3	AS16-ST-04-08PC-E	2320930-3	AS16-HT-04-08PC-E	1871415-3	AS16-ST-03-08PC-E
		776538-4	AS16-ST-04-08PD-E	2320930-4	AS16-HT-04-08PD-E	1871415-4	AS16-ST-03-08PD-E
12 Pos	STAND DIA	776438-1	AS16-ST-04-12PA-N	2320918-1	AS16-HT-04-12PA-N	1717677-1	AS16-ST-03-12PA-N
		776438-2	AS16-ST-04-12PB-N	2320918-2	AS16-HT-04-12PB-N	1717677-2	AS16-ST-03-12PB-N
		776438-3	AS16-ST-04-12PC-N	2320918-3	AS16-HT-04-12PC-N	1717677-3	AS16-ST-03-12PC-N
		776438-4	AS16-ST-04-12PD-N	2320918-4	AS16-HT-04-12PD-N	1717677-4	AS16-ST-03-12PD-N
	REDUC. DIA	776539-1	AS16-ST-04-12PA-E	2320931-1	AS16-HT-04-12PA-E	1717934-1	AS16-ST-03-12PA-E
		776539-2	AS16-ST-04-12PB-E	2320931-2	AS16-HT-04-12PB-E	1717934-2	AS16-ST-03-12PB-E
		776539-3	AS16-ST-04-12PC-E	2320931-3	AS16-HT-04-12PC-E	1717934-3	AS16-ST-03-12PC-E
		776539-4	AS16-ST-04-12PD-E	2320931-4	AS16-HT-04-12PD-E	1717934-4	AS16-ST-03-12PD-E

AMPSEAL 16 CONNECTOR SERIES

Terminals and Connectors

COMING SOON



COMING SOON



Positions	Wire Seal	Sealed Flange Mount Cap (05)		Universal Blind Cap (14)		Universal Blind Plug (16)	
		Part Number	Alias	Part Number	Alias	Part Number	Alias
2 Pos	STAND DIA	1-2448800-1	AS16-ST-05-02PA-N	2040594-1	AS16-ST-14-02	2448820-1	AS16-ST-16-02
		1-2448800-2	AS16-ST-05-02PB-N				
		1-2448800-3	AS16-ST-05-02PC-N				
		1-2448800-4	AS16-ST-05-02PD-N				
	REDUC. DIA	2-2448800-1	AS16-ST-05-02PA-E				
		2-2448800-2	AS16-ST-05-02PB-E				
		2-2448800-3	AS16-ST-05-02PC-E				
		2-2448800-4	AS16-ST-05-02PD-E				
3 Pos	STAND DIA	1-2448801-1	AS16-ST-05-03PA-N	2040594-2	AS16-ST-14-03	2448820-2	AS16-ST-16-03
		1-2448801-2	AS16-ST-05-03PB-N				
		1-2448801-3	AS16-ST-05-03PC-N				
		1-2448801-4	AS16-ST-05-03PD-N				
	REDUC. DIA	2-2448801-1	AS16-ST-05-03PA-E				
		2-2448801-2	AS16-ST-05-03PB-E				
		2-2448801-3	AS16-ST-05-03PC-E				
		2-2448801-4	AS16-ST-05-03PD-E				
4 Pos	STAND DIA	1-2448802-1	AS16-ST-05-04PA-N	2040594-3	AS16-ST-14-04	2448820-3	AS16-ST-16-04
		1-2448802-2	AS16-ST-05-04PB-N				
		1-2448802-3	AS16-ST-05-04PC-N				
		1-2448802-4	AS16-ST-05-04PD-N				
	REDUC. DIA	2-2448802-1	AS16-ST-05-04PA-E				
		2-2448802-2	AS16-ST-05-04PB-E				
		2-2448802-3	AS16-ST-05-04PC-E				
		2-2448802-4	AS16-ST-05-04PD-E				
6 Pos	STAND DIA	1-2448803-1	AS16-ST-05-06PA-N	2040594-4	AS16-ST-14-06	2448820-4	AS16-ST-16-06
		1-2448803-2	AS16-ST-05-06PB-N				
		1-2448803-3	AS16-ST-05-06PC-N				
	REDUC. DIA	2-2448803-1	AS16-ST-05-06PA-E				
		2-2448803-2	AS16-ST-05-06PB-E				
		2-2448803-3	AS16-ST-05-06PC-E				
8 Pos	STAND DIA	1-2448804-1	AS16-ST-05-08PA-N	2040594-5	AS16-ST-14-08	2448820-5	AS16-ST-16-08
		1-2448804-2	AS16-ST-05-08PB-N				
		1-2448804-3	AS16-ST-05-08PC-N				
		1-2448804-4	AS16-ST-05-08PD-N				
	REDUC. DIA	2-2448804-1	AS16-ST-05-08PA-E				
		2-2448804-2	AS16-ST-05-08PB-E				
		2-2448804-3	AS16-ST-05-08PC-E				
		2-2448804-4	AS16-ST-05-08PD-E				
12 Pos	STAND DIA	1-2448805-1	AS16-ST-05-12PA-N	2040594-6	AS16-ST-14-12	2448820-6	AS16-ST-16-12
		1-2448805-2	AS16-ST-05-12PB-N				
		1-2448805-3	AS16-ST-05-12PC-N				
		1-2448805-4	AS16-ST-05-12PD-N				
	REDUC. DIA	2-2448805-1	AS16-ST-05-12PA-E				
		2-2448805-2	AS16-ST-05-12PB-E				
		2-2448805-3	AS16-ST-05-12PC-E				
		2-2448805-4	AS16-ST-05-12PD-E				

COMING SOON

AMPSEAL 16 SEALED FLANGE MOUNT CAP

Family of sealed mounting caps for panel applications, used in harsh environments with high vibration.

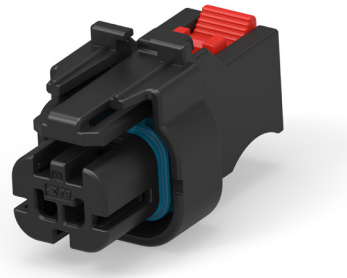
- Number of positions: 2, 3, 4, 6, 8 and 12
- A, B, C & D keys
- M5 inserts
- Standard temperature (-40°C to 125°C)
- IP67 & IP6K9K with rear protection
- Panel (connector and flange ingress protection) thickness up to 6mm



AMPSEAL 16 UNIVERSAL BLIND PLUG

Family of universal keyed blind plugs that offers a sealed protection interface for unmated caps against harsh environments.

- Optional CPA and mounting features (lanyard) available soon
- Number of positions: 2, 3, 4, 6, 8 and 12
- Universal keyed plugs
- Standard temperature (-40°C to 125°C)
- IP67 & IP6K9K with rear protection
- M3 thread hole

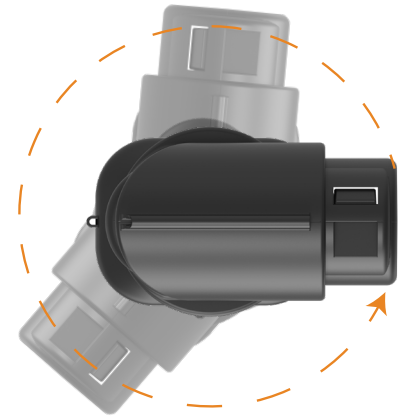


ACCESSORIES

AMPSEAL 16 BACKSHELLS

AMPSEAL 16 backshells provide strain relief, environmental protection and deliver enhanced aesthetics for connectors. They are constructed of robust thermoplastic and install easily by snapping onto the connectors.

- Temperature: -40°C to 125°C
- Flammability: UL94 V0
- Elbow 360° fully rotational, enables wires to be routed in various angles
- Smooth wire exit or corrugated tubing style
- Smooth wire provide strain relief
- Corrugated tubing allow a wide range of conduit sizes to nest within the rear of the backshell
- Smart Part Numbering (Alias) that easily identifies the product features (plug/cap, positions, conduit)

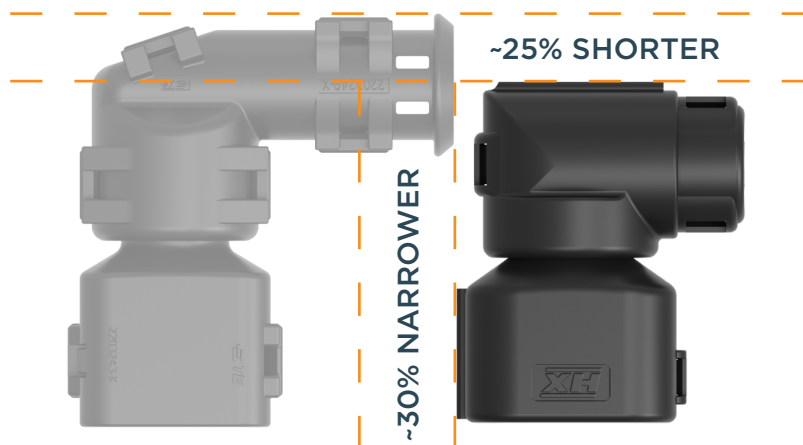


360° FULLY ROTATIONAL ELBOW

The following TE Connectivity document numbers may be helpful:

- [108-151043](#) (Product Specification)
- [408-151043](#) (Instruction Sheet)

Low profile backshells are ~25% shorter and ~30% narrower than the standard right angle backshell.

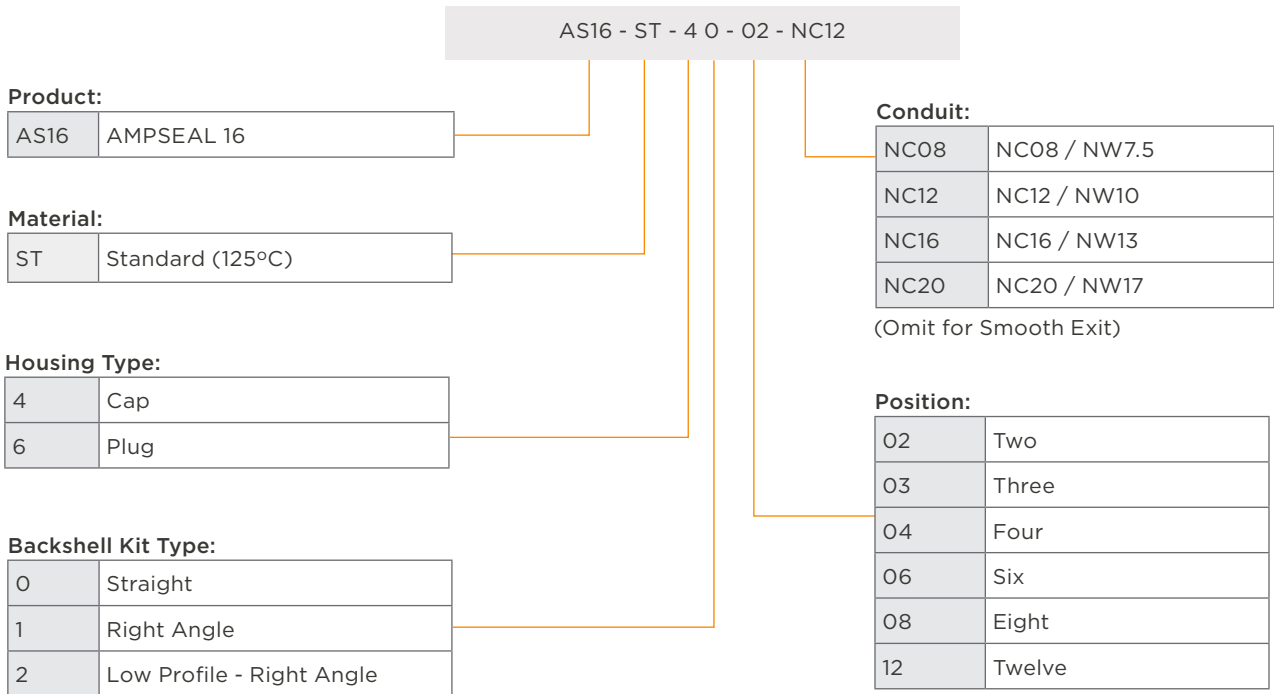


MOUNTING CLIPS



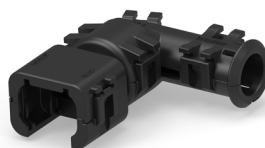
Part Number	Description
1924487-1	Mounting clip without anti-rotational feature
1924487-2	Mounting clip with anti-rotational feature

ALIAS PART NUMBERING SYSTEM



ORDERING INFORMATION

BACKSHELLS FOR PLUGS



		Straight Backshell Kit for Plug (60)		Right-Angle Backshell Kit for Plug (61)		Low Profile, Right-Angle Backshell Kit for Plug (62)	
Pos	Exit Type	Part Number	Alias	Part Number	Alias	Part Number	Alias
2 Pos	Smooth Exit	2292797-1	AS16-ST-60-02-ST	2302488-1	AS16-ST-61-02-RA	--	--
	NC08 / NW7.5	2292797-3	AS16-ST-60-02-ST-NC08	2302488-3	AS16-ST-61-02-RA-NC08	2035366-1	AS16-ST-62-02-90-NC08
	NC12 / NW10	2292797-2	AS16-ST-60-02-ST-NC12	2302488-2	AS16-ST-61-02-RA-NC12	2035366-3	AS16-ST-62-02-90-NC12
	NC16 / NW13	--	--	--	--	2035366-5	AS16-ST-62-02-90-NC16
3 Pos	Smooth Exit	2292798-1	AS16-ST-60-03-ST	2302491-1	AS16-ST-61-03-RA	--	--
	NC08 / NW7.5	2292798-3	AS16-ST-60-03-ST-NC08	2302491-3	AS16-ST-61-03-RA-NC08	2035366-2	AS16-ST-62-03-90-NC08
	NC12 / NW10	2292798-2	AS16-ST-60-03-ST-NC12	2302491-2	AS16-ST-61-03-RA-NC12	2035366-4	AS16-ST-62-03-90-NC12
	NC16 / NW13	--	--	--	--	2035366-6	AS16-ST-62-03-90-NC16
4 Pos	Smooth Exit	2292799-1	AS16-ST-60-04-ST	2302492-1	AS16-ST-61-04-RA	--	--
	NC08 / NW7.5	--	--	--	--	2035366-7	AS16-ST-62-04-90-NC08
	NC12 / NW10	2292799-3	AS16-ST-60-04-ST-NC12	2302492-3	AS16-ST-61-04-RA-NC12	2035366-9	AS16-ST-62-04-90-NC12
	NC16 / NW13	2292799-2	AS16-ST-60-04-ST-NC16	2302492-2	AS16-ST-61-04-RA-NC16	1-2035366-1	AS16-ST-62-04-90-NC16
6 Pos	Smooth Exit	2292800-1	AS16-ST-60-06-ST	2302493-1	AS16-ST-61-06-RA	--	--
	NC08 / NW7.5	--	--	--	--	1-2035366-2	AS16-ST-62-06-90-NC08
	NC12 / NW10	2292800-3	AS16-ST-60-06-ST-NC12	2302493-3	AS16-ST-61-06-RA-NC12	1-2035366-0	AS16-ST-62-06-90-NC12
	NC16 / NW13	2292800-2	AS16-ST-60-06-ST-NC16	2302493-2	AS16-ST-61-06-RA-NC16	2035366-8	AS16-ST-62-06-90-NC16
8 Pos	Smooth Exit	2292801-1	AS16-ST-60-08-ST	2302494-1	AS16-ST-61-08-RA	--	--
	NC16 / NW13	2292801-3	AS16-ST-60-08-ST-NC16	2302494-3	AS16-ST-61-08-RA-NC16	--	--
	NC20 / NW17	2292801-2	AS16-ST-60-08-ST-NC20	2302494-2	AS16-ST-61-08-RA-NC20	--	--
12 Pos	Smooth Exit	2292802-1	AS16-ST-60-12-ST	2302495-1	AS16-ST-61-12-RA	--	--
	NC16 / NW13	2292802-3	AS16-ST-60-12-ST-NC16	2302495-3	AS16-ST-61-12-RA-NC16	--	--
	NC20 / NW17	2292802-2	AS16-ST-60-12-ST-NC20	2302495-2	AS16-ST-61-12-RA-NC20	--	--

AMPSEAL 16 CONNECTOR SERIES

Terminals and Connectors

BACKSHELLS FOR CAPS



		Straight Backshell Kit for Cap (40)		Right-Angle Backshell Kit for Cap (41)		Low Profile, Right-Angle Backshell Kit for Cap (42)	
Pos	Exit Type	Part Number	Alias	Part Number	Alias	Part Number	Alias
2 Pos	Smooth Exit	2292860-1	AS16-ST-40-02-ST	2302481-1	AS16-ST-41-02-RA	--	--
	NC08 / NW7.5	2292860-3	AS16-ST-40-02-ST-NC08	2302481-3	AS16-ST-41-02-RA-NC08	2098436-1	AS16-ST-42-02-90-NC08
	NC12 / NW10	2292860-2	AS16-ST-40-02-ST-NC12	2302481-2	AS16-ST-41-02-RA-NC12	2098436-3	AS16-ST-42-02-90-NC12
	NC16 / NW13	--	--	--	--	2098436-5	AS16-ST-42-02-90-NC16
3 Pos	Smooth Exit	2292861-1	AS16-ST-40-03-ST	2302482-1	AS16-ST-41-03-RA	--	--
	NC08 / NW7.5	2292861-3	AS16-ST-40-03-ST-NC08	2302482-3	AS16-ST-41-03-RA-NC08	2098436-2	AS16-ST-42-03-90-NC08
	NC12 / NW10	2292861-2	AS16-ST-40-03-ST-NC12	2302482-2	AS16-ST-41-03-RA-NC12	2098436-4	AS16-ST-42-03-90-NC12
	NC16 / NW13	--	--	--	--	2098436-6	AS16-ST-42-03-90-NC16
4 Pos	Smooth Exit	2292862-1	AS16-ST-40-04-ST	2302483-1	AS16-ST-41-04-RA	--	--
	NC08 / NW7.5	--	--	--	--	2098436-7	AS16-ST-42-04-90-NC08
	NC12 / NW10	2292862-3	AS16-ST-40-04-ST-NC12	2302483-3	AS16-ST-41-04-RA-NC12	2098436-9	AS16-ST-42-04-90-NC12
	NC16 / NW13	2292862-2	AS16-ST-40-04-ST-NC16	2302483-2	AS16-ST-41-04-RA-NC16	1-2098436-1	AS16-ST-42-04-90-NC16
6 Pos	Smooth Exit	2292863-1	AS16-ST-40-06-ST	2302484-1	AS16-ST-41-06-RA	--	--
	NC08 / NW7.5	--	--	--	--	2098436-8	AS16-ST-42-06-90-NC08
	NC12 / NW10	2292863-3	AS16-ST-40-06-ST-NC12	2302484-3	AS16-ST-41-06-RA-NC12	1-2098436-0	AS16-ST-42-06-90-NC12
	NC16 / NW13	2292863-2	AS16-ST-40-06-ST-NC16	2302484-2	AS16-ST-41-06-RA-NC16	1-2098436-2	AS16-ST-42-06-90-NC16
8 Pos	Smooth Exit	2292864-1	AS16-ST-40-08-ST	2302485-1	AS16-ST-41-08-RA	--	--
	NC16 / NW13	2292864-3	AS16-ST-40-08-ST-NC16	2302485-3	AS16-ST-41-08-RA-NC16	--	--
	NC20 / NW17	2292864-2	AS16-ST-40-08-ST-NC20	2302485-2	AS16-ST-41-08-RA-NC20	--	--
12 Pos	Smooth Exit	2292865-1	AS16-ST-40-12-ST	2302486-1	AS16-ST-41-12-RA	--	--
	NC16 / NW13	2292865-3	AS16-ST-40-12-ST-NC16	2302486-3	AS16-ST-41-12-RA-NC16	--	--
	NC20 / NW17	2292865-2	AS16-ST-40-12-ST-NC20	2302486-2	AS16-ST-41-12-RA-NC20	--	--

AMPSEAL 16 INTEGRATED RESISTORS

- AMPSEAL 16 integrated resistors feature IP67 moisture resistance and 50-cycles mating durability, making them ideal for heavy-duty applications.
- Environmentally sealed for harsh conditions.
- The series eliminates issues with soldering components in the wiring harness.
- Housed in thermoplastic material.
- AMPSEAL 16 integrated resistors are factory-assembled for simple plug-and-play installation.
- Operate at a -40°C to +125°C temperature range, resistors offer from 120 to 20K Ohm resistance.



Resistors

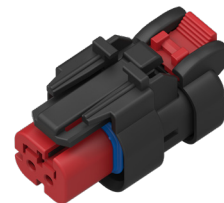
Caps

Part Number	Alias	Resistance
1939556-4	AS16-ST-04-02PA-R0120	120 Ohm
1939556-5	AS16-ST-04-02PA-R0150	150 Ohm
1939604-1	AS16-ST-04-02PA-R1000	1k Ohm
1939556-8	AS16-ST-04-02PA-R2200	2.2k Ohm
1939556-9	AS16-ST-04-02PA-R020K	20k Ohm



Plug

Part Number	Alias	Resistance
2040278-2	AS16-ST-06-02SA-R0120	120 Ohm



ALIAS PART NUMBERING SYSTEM

AS16 - ST - 04 - 02 P A - R0120

Product:

AS16	AMPSEAL 16
------	------------

Material:

ST	Standard (125°C)
----	------------------

Housing Type:

04	In-line Cap
06	In-line Plug

Position:

02	Two
----	-----

Terminal:

P	Pin
S	Socket

Resistance:

R0120	120 Ohm
R0150	150 Ohm
R1000	1K Ohm
R2200	2.2K Ohm
R020K	20K Ohm

Key / Code:

A	Code 1
---	--------

AMPSEAL 16 CONTACTS

AMPSEAL 16 use the HDSF size 16 Contact System. The contacts are round, Stamped & Formed contacts with dual beam sockets. AMPSEAL 16 can also use Solid Contact System.

HDSF 16 Contact Performance Specifications

Durability

SAE J2030 6.11. 50 cycles. See note.

Current Rating

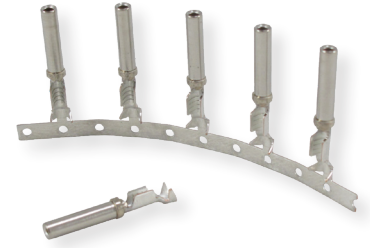
Up to 13 amps, consult TE product document 108-2184.

Contact Retention

IEC 512-8, Test 51a. Apply axial load of 111 N to contacts at a maximum rate of 10 N per second (or 50mm per minute) and hold for 10 seconds. Contacts shall not dislodge.

The following TE Connectivity document numbers may be helpful:

- [108-2422](#) (Product Specification)
- [114-13045](#) (Application Specification)



Crimp Tensile Strength

USCAR 21 @ 50mm/min	
Wire Gauge	Tensile Strength
18 AWG	90 N Min
16 AWG	120 N Min
14 AWG	180 N Min

Voltage Drop

Wire Size	Test Current Amps	Voltage Drop (millivolts max)
18	8	100
16	10	100
14	13	100

Note: Shall meet visual requirements, show no physical damage, and meet requirements of additional tests as specified in the Product Qualification and Requalification Test Sequence in Figure 3 of TE product document 108-2184. USCAR is a trademark.

Sealing Plugs

Open cavities provide pathways for contaminants to enter the connectors. To maintain seal integrity, any unused cavity must be filled with the appropriate size sealing plug.



Color	Part Number	Contact Size	Wire Gauge Range	Description
Yellow	776363-1	Size 16	16-20 AWG	PBT, used with AMPSEAL 16 (standard and reduced diameter cavities)

ORDERING INFORMATION

HDSF 16 STAMPED & FORMED CONTACTS FOR AMPSEAL 16 CONNECTORS



Pin Part Numbers							
Strip Form		Loose Piece		Wire Size AWG (mm ²)	Insulation Diameter (mm)	Wire Insulation Support	Finish
Part Number	ALIAS	Part Number	ALIAS				
1924463-1	HDSF-16P-20A-AU	1924579-1	HDSF-16P-20A-AU-LP	18 - 20 (0.8 - 0.5)	.107-.05 (2.72-1.27)	Yes	AU
1924463-3	HDSF-16P-20A-NI	1924579-3	HDSF-16P-20A-NI-LP	18 - 20 (0.8 - 0.5)	.107-.05 (2.72-1.27)	Yes	NI
776349-1	HDSF-16P-20B-AU	-	-	18 - 20 (0.8 - 0.5)	.131-.089 (3.33-2.26)	Yes	AU
776349-3	HDSF-16P-20B-NI	-	-	18 - 20 (0.8 - 0.5)	.131-.089 (3.33-2.26)	Yes	NI
638078-1	HDSF-16P-16B-AU	776300-1	HDSF-16P-16B-AU-LP	14 - 18 (2.0 - 0.8)	.131-.089 (3.33-2.26)	Yes	AU
638078-3	HDSF-16P-16B-NI	776300-2	HDSF-16P-16B-NI-LP	14 - 18 (2.0 - 0.8)	.131-.089 (3.33-2.26)	Yes	NI
638112-1	HDSF-16P-16C-AU	776298-1	HDSF-16P-16C-AU-LP	14 - 18 (2.0 - 0.8)	.155-.077 (3.94-1.96)	No	AU
638112-3	HDSF-16P-16C-NI	776298-2	HDSF-16P-16C-NI-LP	14 - 18 (2.0 - 0.8)	.155-.077 (3.94-1.96)	No	NI
2098250-1	HDSF-16P-18D-AU	-	-	18 (1.5 - 0.8)	.118-.065 (3.00-1.65)	Yes	AU
2098250-3	HDSF-16P-18D-NI	-	-	18 (1.5 - 0.8)	.118-.065 (3.00-1.65)	Yes	NI
2098252-1	HDSF-16P-14E-AU	-	-	14 - 16 (2.0 - 1.5)	.128-.083 (3.25-2.10)	Yes	AU
2098252-3	HDSF-16P-14E-NI	-	-	14 - 16 (2.0 - 1.5)	.128-.083 (3.25-2.10)	Yes	NI

AMPSEAL 16 CONNECTOR SERIES

Terminals and Connectors

HDSF 16 STAMPED & FORMED CONTACTS FOR AMPSEAL 16 CONNECTORS (CON'T)



Socket Part Numbers							
Strip Form		Loose Piece		Wire Size AWG (mm ²)	Insulation Diameter (mm)	Wire Insulation Support	Finish
Part Number	ALIAS	Part Number	ALIAS				
1924464-1	HDSF-16S-20A-AU	1924580-1	HDSF-16P-20A-AU-LP	18 - 20 (0.8 - 0.5)	.107-.05 (2.72-1.27)	Yes	AU
1924464-2	HDSF-16S-20A-NI	1924580-2	HDSF-16P-20A-NI-LP	18 - 20 (0.8 - 0.5)	.107-.05 (2.72-1.27)	Yes	NI
776493-1	HDSF-16S-20B-AU	-	-	18 - 20 (0.8 - 0.5)	.131-.089 (3.33-2.26)	Yes	AU
776493-2	HDSF-16S-20B-NI	-	-	18 - 20 (0.8 - 0.5)	.131-.089 (3.33-2.26)	Yes	NI
776492-1	HDSF-16S-16B-AU	776299-1	HDSF-16P-16B-AU-LP	14 - 18 (2.0 - 0.8)	.131-.089 (3.33-2.26)	Yes	AU
776492-2	HDSF-16S-16B-NI	776299-2	HDSF-16P-16B-NI-LP	14 - 18 (2.0 - 0.8)	.131-.089 (3.33-2.26)	Yes	NI
776491-1	HDSF-16S-16C-AU	776297-1	HDSF-16P-16C-AU-LP	14 - 18 (2.0 - 0.8)	.155-.077 (3.94-1.96)	No	AU
776491-2	HDSF-16S-16C-NI	776297-2	HDSF-16P-16C-NI-LP	14 - 18 (2.0 - 0.8)	.155-.077 (3.94-1.96)	No	NI
2098251-1	HDSF-16S-18D-AU	-	-	18 (1.5 - 0.8)	.118-.065 (3.00-1.65)	Yes	AU
2098251-2	HDSF-16S-18D-NI	-	-	18 (1.5 - 0.8)	.118-.065 (3.00-1.65)	Yes	NI
2098253-1	HDSF-16S-14E-AU	-	-	14 - 16 (2.0 - 1.5)	.128-.083 (3.25-2.10)	Yes	AU
2098253-2	HDSF-16S-14E-NI	-	-	14 - 16 (2.0 - 1.5)	.128-.083 (3.25-2.10)	Yes	NI

ALIAS PART NUMBERING SYSTEM

HDSF - 16 P - 20 A - AU - LP

Product

HDSF	Heavy Duty Stamped & Formed
------	-----------------------------

Size

16	Size 16
----	---------

Terminal

S	Socket
P	Pin

Wire Size AWG (mm²)

20	18 - 20 (0.8 - 0.5)
16	14 - 18 (2.0 - 0.8)
18	18 (1.5 - 0.8)
14	14 - 16 (2.0 - 1.5)

Packaging Code:

LP	Loose Piece
----	-------------

(Omit for Blind Caps / Plugs)

Plating Material

AU	Gold
NI	Nickel

Insulation Diameter

A	.107 - .05 (2.72 - 1.27)
B	.131 - .089 (3.33 - 2.26)
C	.155 - .077 (3.94 - 1.96) No insulation Support
D	.118 - .065 (3.00 - 1.65)
E	.128 - .083 (3.25 - 2.10)

AMPSEAL 16 TOOLING

AUTOMATED TOOLING FOR HDSF 16 CONTACTS



OCEAN end
feed applicator



OCEAN side
feed applicator

Pin Strip Form	Socket Strip Form	Applicator P/N	Description
1924463-1 1924463-3	1924464-1 1924464-2	2151962-1	OCEAN end feed applicator with mechanical feed
		2151962-2	OCEAN end feed applicator with pneumatic feed
638078-1 638078-3 776349-1 776349-3	776492-1 776492-2 776493-1 776493-2	2151731-1	OCEAN end feed applicator with mechanical feed
		2151731-2	OCEAN end feed applicator with pneumatic feed
638112-1 638112-3	776491-1 776491-2	2151239-1	OCEAN end feed applicator with mechanical feed
		2151239-2	OCEAN end feed applicator with pneumatic feed
2098250-1 2098250-3	2098251-1 2098251-2	2151617-1	OCEAN end feed applicator with mechanical feed
		2151617-2	OCEAN end feed applicator with pneumatic feed
2098252-1 2098252-3	2098253-1 2098253-2	1530207-1	OCEAN side feed applicator that crops the terminal strip, for use in lead-maker
		1530207-2	OCEAN side feed applicator that crops the terminal strip, for use in bench press
		1530207-6	OCEAN side feed applicator that does not crop the terminal strip, for use in lead-maker

Note: Applicators with additional feed styles are available, contact your representative

HAND TOOLS FOR HDSF 16 CONTACTS



Pin Strip Form	Pin Loose Piece	Socket Strip Form	Socket Loose Piece	Tool P/N	Description
1924463-1 1924463-3	1924579-1 1924579-3	1924464-1 1924464-2	1924580-1 1924580-2	2119118-1	PRO-CRIMPER III hand tool and die set assembly
638078-1 638078-3 776349-1 776349-3	776300-1 776300-2	776492-1 776492-2 776493-1 776493-2	776299-1 776299-2	91337-1	PRO-CRIMPER III hand tool and die set assembly
638112-1 638112-3	776298-1 776298-2	776491-1 776491-2	776297-1 776297-2	2217753-1	CERTI-CRIMP II straight action hand tool

Note: Base PRO-CRIMPER III tool part number with -2 suffix is the part number for the die set, which can be ordered separately

Extraction Tool for HDSF 16 Contacts

Part Number	Description
776106-1	Contact extraction tool for HDSF 16 contacts



AMPSEAL 16 SOLID CONTACTS

The solid contacts are designed for use in heavy-duty applications and are available with either a nickel or gold plating finish.

Solid Contacts



Pin	Socket	Wire Size AWG (mm ²)	Finish
2300908-1	0462-006-1631	22 - 24 (0.35 - 0.22)	Gold
0460-202-1631	0462-201-1631	16 - 20 (1.5 - 0.50)	Gold
0460-202-16141	0462-201-16141	16 - 20 (1.5 - 0.50)	Nickel
0460-215-1631	0462-209-1631	14 (2.0)	Gold
0460-215-16141	0462-209-16141	14 (2.0)	Nickel

Solid Contacts Specifications - Product Documentation

- [114-151004](#) (Application Specification)
- [108-151004](#) (Product Specification)

SOLID CONTACTS TOOLING

Hand Tools for Solid Contacts



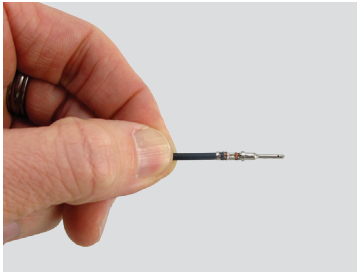
Power Crimp Press
HDP-400



Hand Crimping Tool
HDT-48-00

AMPSEAL 16 HOW TO INSTRUCTIONS

Contact Insertion



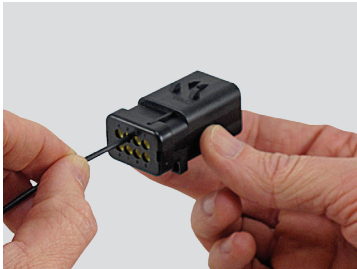
Step 1:
Grasp crimped contact approximately one inch behind the contact barrel.



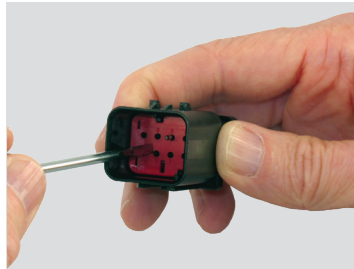
Step 2:
Verify the TPA is in the pre-staged position, unlocked.



Step 3:
Align the contact with the desired circuit cavity at the rear of the housing assembly.

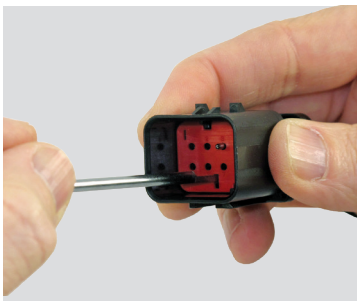


Step 4:
Push the contact straight into the connector cavity until the contact retention finger returns to its normal position behind the retention shoulder on the contact. A slight tug will verify the contact is locked in place.

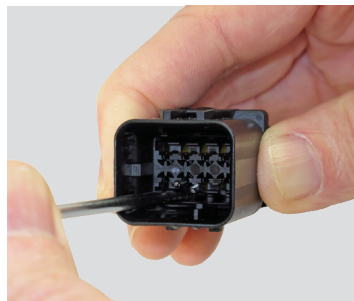


Step 5:
When all of the required contacts have been inserted, push the TPA into the fully locked position.

Contact Removal



Step 1:
Insert the removal tool into the TPA extraction slot and pull until the TPA is completely removed from the housing.



Step 2:
Insert the tool into the contact cavity and deflect the contact retention finger.

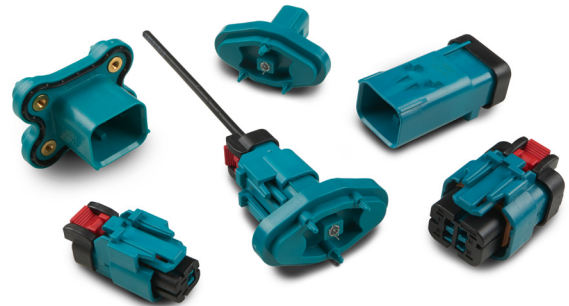


Step 3:
Gently pull the wire until the contact is free from the housing.

AMPSEAL 16 CONNECTORS WITH MATE-AX COAXIAL TERMINALS

Data Connectivity Solutions

TE Connectivity’s (TE) AMPSEAL 16 connectors with MATE-AX miniaturized FAKRA coaxial system delivers analog signal up to 6 GHz and digital data transmission to reliably connect antennas, cameras, sensors, and displays within heavy-duty commercial and industrial vehicles. Their easy-to-use, flexible design utilizes widely available automotive-standard RTK031 and RG174 coaxial cable types to enable easy integration into existing coaxial architecture. They support a wide range of communication protocols, including FPD-LINK-II/III/IV, GMSL 2/3, Apix2/3, GNSS, GPS, 4G, and LTE.



AMPSEAL 16 connectors with coaxial terminals offer a higher packaging density than similar products with a robust sealed housing design. The integration of a family seal into the housing design not only eases assembly but can also reduce manufacturing and service costs by eliminating expensive heat shrink tubing and time-consuming application.

These products meet the vibration, mechanical shock and temperature requirements of rugged vehicles by utilizing the proven design of our AMPSEAL 16 housings along with the superior signal performance of our MATE-AX miniature coaxial terminals.

Features & Benefits

Easy, Flexible Design

- Utilizes standard 50 ohm RTK031, RG174 coaxial cable.
- Simple latch and lock design for ease of connector mating.
- 4 color-coded keying options available
- Supports a wide range of communication protocols with 15 meter link and 2 in-line connections.

Reduce Manufacturing and Service Costs

- Integrated family seal helps eliminate the use of expensive heat shrink tubing and the associated time-consuming application.

Rugged and Reliable

- Housing design features locking CPA latch and a terminal position assurance (TPA) to help confirm contact positioning and avoid misalignment.
- Vibration and mechanical shock resistance.
- IP67/IP69K (with backshell) dust and water protection.

Applications



Radar/
LiDAR



Camera Systems



Telemetry
Units



Infotainment



Antennas



V2X



ADAS

Key Industries



Agriculture



Construction



Truck



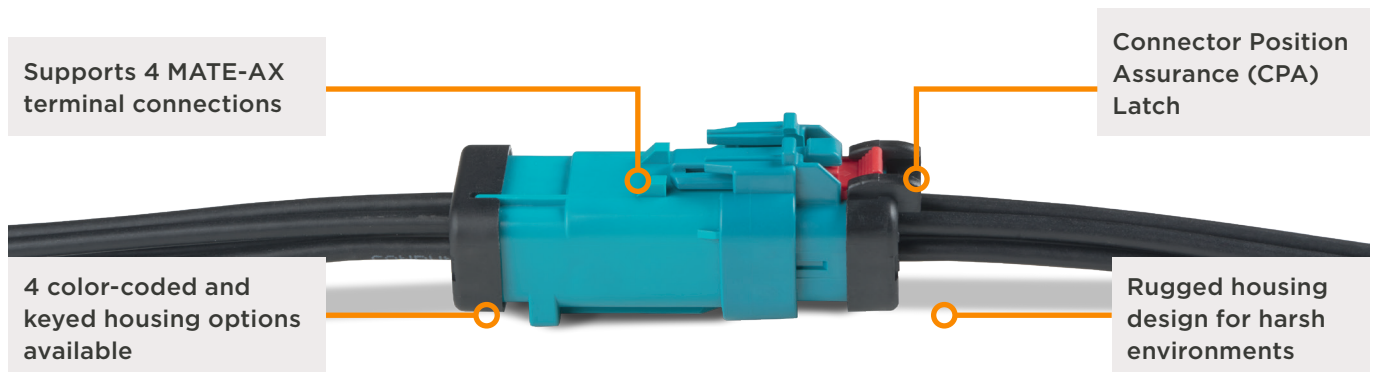
Bus

AMPSEAL 16 CONNECTOR SERIES

Terminals and Connectors

Product Features







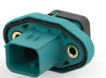

Communication Protocols	Gigabit Multimedia Serial Link (GMSL) 2/3 15 meters Flat Panel Display Link (FPD-LINK) II/III/IV 15 meters
Cable Type	RTK031, RG174 type 50 ohm coaxial cable
Application	15m channel link with up to 2 in-lines
Sealing Performance	IP67 and IP69K (with backshell)
Operating Temperature	-40°C to +105°C
Connections	Cable-to-cable, bulkhead mount, cable-to-board/device
Terminal System	MATE-AX coaxial terminals
Standards & Specifications	Application Specification: 114-94667 Product Specification (connectors): 108-94799 Product Specification (terminals): 108-94515



AMPSEAL 16 CONNECTOR SERIES




Terminals and Connectors

Connectors

Type		Housings				Bulkhead (Male)		180° PCB Mount Headers	
Position	Keying	Plug Assembly (Female)		In-Line Assembly (Male)					
1	A		2355843-1		2374559-1		2449917-1		2355844-1
4			2338212-1		2338211-1		2339729-1		2356408-1

Type		180° PCB Mount Headers With Dispensed Seal		90° PCB Mount Headers With Dispensed Seal	
Position	Keying				
4	A		2439715-5		2394674-5
	B	--	--		2394674-6

Accessories & Terminals

Description		Part Number	Use With	
1p PCB Terminal 180° Assembly		2356413-2	2379753-1 (PCB/Interface Cover)	
AMPSEAL 16 Cavity Plug (Yellow)		776363-1	2338212-X, 2338211-X, 2339729-X	
1P Sealing Plug		2461552-1	2374559-X 2449917-X	
	Backshells	Smooth exit, no window	2452956-1	2355843-X
		NW7.5 exit, no window	2452956-2	2355843-X
		Smooth exit, window	2452956-3	2355843-X
		NW7.5 exit, window	2452956-4	2355843-X
	Backshell Kits	4p Plug (Female)	2292799-X	2338212-X
		4p In-line (Male)	2292862-X	2338211-X, 2339729-X
	Mounting Clips (Straight)	20.5 mm	1924487-1	2338211-1, 2374559-1
		20.5 mm, anti-rotation post	1924487-2	
		11 mm	1924487-3	

Note: There are three options for each backshell Male and Female -1,-2,-3. -1s are smooth cable exit, -2 and -3 are for corrugated tubing.

MATE-AX Cable Assemblies



Cable Type	Configuration	Cable Length (m)	Part Number
RTK031 (Typically DACAR 302-3)	Female-to-Female	0.5	2362355-1
		1.0	2362355-2
		1.5	2362355-3
		3.0	2362355-4
		5.0	2362355-5
	Male-to-Female	0.5	2362356-1
		1.0	2362356-2
		1.5	2362356-3
		3.0	2362356-4
		5.0	2362356-5
RG174 (Typically DACAR 462-2)	Female-to-Female	0.5	2362358-1
		1.0	2362358-2
		1.5	2362358-3
		3.0	2362358-4
		5.0	2362358-5
	Male-to-Female	0.5	2362359-1
		1.0	2362359-2
		1.5	2362359-3
		3.0	2362359-4
		5.0	2362359-5

Non-standard cable lengths are available upon request.

Online Resources

1. [te.com/ict](https://www.te.com/ict)
2. [te.com/ictliterature](https://www.te.com/ictliterature)
3. [te.com/ictvideos](https://www.te.com/ictvideos)

About TE Connectivity

TE Connectivity is a global industrial technology leader creating a safer, sustainable, productive, and connected future. Our broad range of connectivity and sensor solutions enable the distribution of power, signal and data to advance next-generation transportation, renewable energy, automated factories, data centers, medical technology and more. With more than 85,000 employees, including 9,000 engineers, working alongside customers in approximately 130 countries, TE ensures that EVERY CONNECTION COUNTS. Learn more at www.te.com and on LinkedIn, Facebook, WeChat, Instagram and X (formerly Twitter).

Connect With Us

We make it easy to connect with our experts and are ready to provide all the support you need. For additional information or product assistance, please contact your field representative or our customer service department. Additional information is also available on the website [te.com/ict](https://www.te.com/ict)

te.com

AMPSEAL 16, DEUTSCH, PRO-CRIMPER, CERTI-CRIMP, OCEAN, TE, TE Connectivity, TE connectivity (logo), and EVERY CONNECTION COUNTS are trademarks owned or licensed by the TE Connectivity plc family of companies. Other product names, logos, and company names mentioned herein may be trademarks of their respective owners.

The information given herein, including drawings, illustrations and schematics which are intended for illustration purposes only, is believed to be reliable. However, TE Connectivity makes no warranties as to its accuracy or completeness and disclaims any liability in connection with its use. TE Connectivity's obligations shall only be as set forth in TE Connectivity's Standard Terms and Conditions of Sale for this product and in no case will TE Connectivity be liable for any incidental, indirect or consequential damages arising out of the sale, resale, use or misuse of the product. Users of TE Connectivity products should make their own evaluation to determine the suitability of each such product for the specific application.

©2026 TE Connectivity. All Rights Reserved.

7-1773982-8 04-26

TE Connectivity
ICT

United States: +1 800 522 6752
China: +86 400 820 6015
Germany: +49 6151 607 1999
Japan: +86 044 844 8052