

ACCESSORIES FOR CIRCULAR PLASTIC CONNECTORS

Accessories for Circular Plastic Connectors

Accessories come in all shapes and sizes, and it is important to have those additional components that ease installation, provide extra stability, and help enable a cleaner connection for your designs. TE Connectivity (TE) offers a wide range of accessories for Circular Plastic Connectors (CPC) Series 1-6 such as cable clamps, flexible cable boots, dust caps and more.

Explore our Circular Plastic Connector (CPC) accessories below for the right accompaniment to your design. Additional information and diagrams can be found in the [CPC Catalog](#).

Note: accessories are categorized by shell size: For example, size 23 cable clamps all fit to the size requirements of size 23 connectors

Cable Clamps

TE's receptacles and plugs



Standard Size

Material

Black thermoplastic heat-stabilized, fire-resistant, self-extinguishing, UL 94V-0

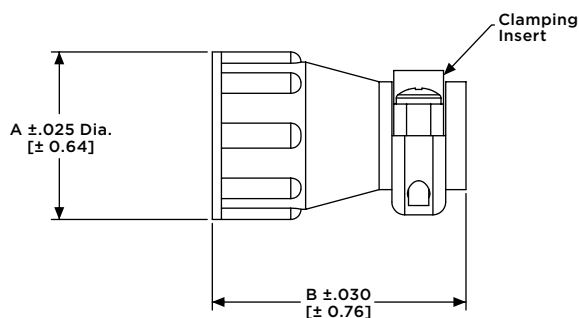
Shell Size	Dimensions		Cable O.D. (Max.)	Thread Size	Part No.	
	A	B			Individually Packaged	Bulk Packaged*
11	.825 [20.96]	1.250 [31.75]	.329 [8.36]	5/8-24 UNEF-2B	1-206062-4	1-206062-7** (400)
13	.950 [24.13]	1.400 [35.56]	.453 [11.51]	3/4-20 UNEF-2B	206966-7	206966-9** (200)
17	1.125 [28.58]	1.400 [35.56]	.453 [11.51]	15/16-20 UNEF-2B	206070-8	1-206070-0** (200)
23	1.600 [40.64]	1.555 [39.5]	.703 [17.86]	1-3/8-18 UNEF-2B	206138-8	1-206138-0** (100)

* Numbers in parentheses specify, in multiples, the minimum quantity of parts that can be ordered.

** Packaging includes two screws: shell sizes 11-17, screw length .500 [12.7]; shell size 23, screw length .625 [15.88].

Notes:

- Clamping areas adjustable by inverting or changing clamping inserts. The quantity of inserts supplied with each assembly is as follows: for size 11 cable clamps, one insert; for all other cable clamps, two inserts.
- Components for all cable clamps are packaged unassembled. This includes the cable clamp, two screws and the clamping inserts.
- Cable clamps can be threaded directly onto plugs or receptacles, or onto back-shell extenders.
- Replacement screws are available in the following sizes: 3/8 in. [9.52] – [5019024-1](#), 1/2 in. [12.7] – [5019024-2](#), 5/8 in. [15.88] – [5019024-3](#), 1 in. [25.4] – [5019024-4](#), 3/4 in. [19.05] – [5019024-5](#).
- Cable clamp inserts not sold separately.



Note: All part numbers are RoHS Compliant.

Dimensions are in inches and millimeters unless otherwise specified. Values in brackets are metric equivalents. Dimensions are shown for reference purposes only. Specifications subject to change.

Accessories for Circular Plastic Connectors



Large Size

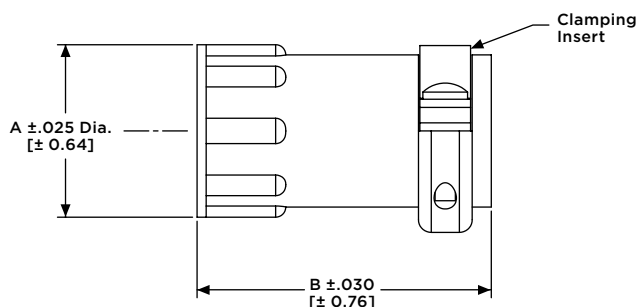
Shell Size	Dimensions		Cable O.D. (Max.)	Thread Size	Part No.	
	A	B			Individually Packaged	Bulk Packaged*
11	.850 [21.59]	1.450 [36.83]	.453 [11.51]	5/8-24 UNEF-2B	206358-5	206358-6 ** (200)
13	1.131 [28.73]	1.655 [42.04]	.703 [17.86]	3/4-20 UNEF-2B	207008-5	207008-6 ** (100)
17	1.131 [28.73]	1.655 [42.04]	.703 [17.86]	15/16-20 UNEF-2B	206322-9	1-206322-0 ** (100)
23	1.600 [40.64]	1.655 [42.04]	1.125 [28.58]	1-3/8-18 UNEF-2B	206512-5	206512-6 ** (75)

* Numbers in parentheses specify, in multiples, the minimum quantity of parts that can be ordered.

**Packaging includes two screws: shell size 11, screw length .500 [12.7]; shell sizes 13-23, screw length .625 [15.88].

Notes:

- Clamping areas adjustable by inverting or changing clamping inserts. The quantity of inserts supplied with each assembly is as follows: for size 23 cable clamps, four inserts; for all other cable clamps, two inserts.
- Components for all cable clamps are packaged unassembled. This includes the cable clamp, two screws and the clamping inserts.
- Cable clamps can be threaded directly onto plugs or receptacles, or onto back-shell extenders (page 40).
- Replacement screws are available in the following sizes: 3/8 in. [9.52] – [5019024-1](#), 1/2 in. [12.7] – [5019024-2](#), 5/8 in. [15.88] – [5019024-3](#), 1 in. [25.4] – [5019024-4](#), 3/4 in. [19.05] – [5019024-5](#).
- Cable clamp inserts not sold separately.



Flexible Cable Boots and Internal Cable Grips



Type	Shell Size	Material	Cable Range	Part No.
Cable boot	11	Black thermoplastic	.150-.250 [3.81-6.35] Dia.	207489-1
Cable grip				207490-1
Cable boot	17	Black thermoplastic	Dia. = .325 [8.26] for cable range of .200-.250 [5.08-6.35]	207241-1
Cable grip				207387-1
Cable grip			Dia. = .385 [9.78] for cable range of .250-.350 [6.35-8.89]	207387-2

Flexible cable boots, with internal grip installed, provide strain relief capabilities for jacketed cable in applications where aesthetic appearance is essential. They can be threaded onto plugs or receptacles.

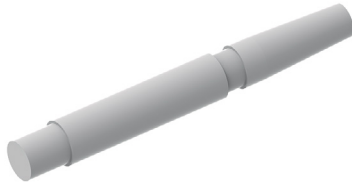
Note: All part numbers are RoHS Compliant.

Dimensions are in inches and millimeters unless otherwise specified. Values in brackets are metric equivalents. Dimensions are shown for reference purposes only. Specifications subject to change.

Accessories for Circular Plastic Connectors

Keying Plugs

Keying plugs are used to provide keying capabilities for CPC series 1, 2, 3, and 4. Keying plugs are used in socket cavities of standard sex plugs and reverse sex receptacles, except when used with sealing caps. Seal protectors are recommended to aid contact insertion through the wire entry seal and are reusable.



TYPE	MATERIAL	COMPATIBLE WITH	PART NO.
Series 1 and Series 4 keying plug	Nylon, natural, UL94V-2 rated	Types III+ contacts	200821-1
Series 3 and Series 4 keying plugs – socket	Nylon, natural, UL94V-2 rated	Type XII contacts	206508-1
Series 3 and Series 4 keying plugs – pin	Thermoplastic, black, UL94V-0 rated	Type XII contacts	207597-1
Series 1 sealed key plugs – sockets	-	-	208338-1
Series 1 sealed key plugs – pin	-	-	208337-1
Wire entry seal plug	Polypropylene, natural	-	796075-1

Panel Mount Flanges

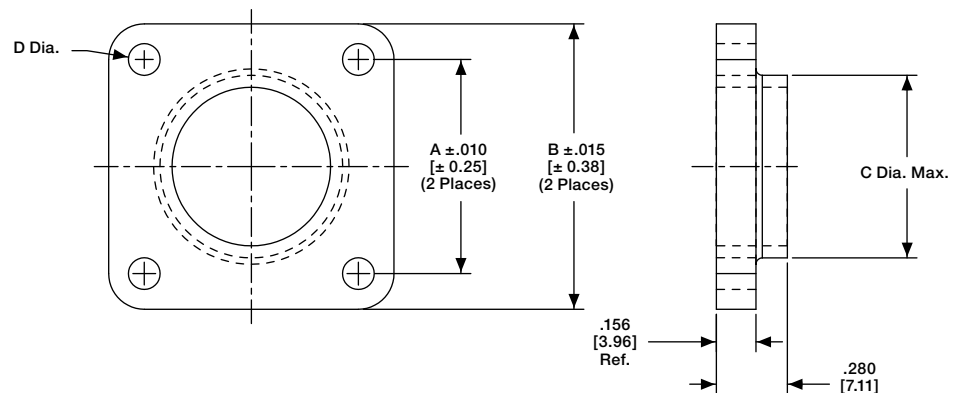
A panel mount flange is used in applications that require the plug half of a connector to be panel mounted



Shell Size	Dimensions				Part No.
	A	B	C	D	
11	.844 [21.44]	1.125 [28.58]	.750 [19.05]	.125 [3.18]	207299-1
13	.969 [24.61]	1.280 [32.51]	.875 [22.22]	.125 [3.18]	207299-2
17	1.125 [28.58]	1.435 [36.45]	1.110 [28.19]	.150 [3.81]	207299-3
23	1.438 [36.53]	1.750 [44.45]	1.510 [38.35]	.150 [3.81]	207299-4

Material

Black thermoplastic



Note: All part numbers are RoHS Compliant.

Dimensions are in inches and millimeters unless otherwise specified. Values in brackets are metric equivalents.
Dimensions are shown for reference purposes only. Specifications subject to change.

One-Piece or Two-Piece Sealed CPC Sealing Accessories

Flange Seals



Shell Size	Part No.
11	81665-3
13	81665-4
17	81665-2
23	81665-5

Material

Neoprene, black

Sealing Caps

Sealing caps are used to protect exposed contacts of unmated receptacles.



Shell Size	Series	Plastic Strap Part No.	Metal Bead Chain Part No.
11	1, 2	206903-2	208800-1
13	1	211870-2	213485-1
17	1, 2, 3	207445-3	208652-1
	5, 6	2423641-1	2423641-2
23	1, 3, 4	207446-3	208680-1
	2	207446-4	208680-2

Material and Finish

Cap – Thermoplastic, heat stabilized, fire resistant, self-extinguishing, 94V-1 rated, black

Sealing Gasket – Neoprene, black

Bead Chain – Steel, nickel plated

Bead Chain Coupling – Brass, plated nickel

Dust Caps



Shell Size	Part Number
8	1604089-1
11	1604089-2

Note: All part numbers are RoHS Compliant.

Dimensions are in inches and millimeters unless otherwise specified. Values in brackets are metric equivalents.
Dimensions are shown for reference purposes only. Specifications subject to change.

Accessories for Circular Plastic Connectors

Heat Shrink Tubing Seals

A jacketed cable seal kit provides an environmentally sealed connection for jacketed cable.



Sealing Range (Dia.)	Kit Number
.300-.450 [7.62-11.43]	207052-1
.450-.600 [11.43-15.24]	207052-2
.600-.875 [15.24-22.22]	207052-3

Material

Peripheral Seal – Grey elastomer

Collar – Aluminum

Jacketed Cable Seal – Black rubber

Back-Shell Extender – Black glass-filled thermoplastic

Special Clamp Saddle – Black thermoplastic

Rubber Boot

Rubber boots are used with jacketed cable to provide splashproof connections for Series 1 and Series 3 connectors. (Not for metal shell connectors.)



Shell Size	Cable Dia. Sealing Range	Part No.
11	.219-.438 [5.56-11.13]	206304-1

Material

Black neoprene

Notes:

1. Rubber boots are recommended for use with jacketed cable and can be used on plugs or receptacles, except Series 2 connectors.
2. For detailed performance data on rubber boots, refer to Product Specification No. 108-10024.

Heat Shrink Boots



Shell Size	Part Number
8	1546997-1
11	1546921-1

Note: All part numbers are RoHS Compliant.

Dimensions are in inches and millimeters unless otherwise specified. Values in brackets are metric equivalents.

Dimensions are shown for reference purposes only. Specifications subject to change.

Cable Entry Seals

Heat Shrinkable Sealing Boots

Cable entry seals are used with jacketed cable to provide an environmentally sealed wire-to-connector system. They can be used with either plugs or receptacles.



Thick Wall Boots

Material

Internal Sleeve – Nylon

Outer Tubing –

Polyolefin, black

Shell Size	Expanded Wall Thickness	Sealing Range (Dia.)	Max. Recovered Inside Diameter	Part No.
11	.050 [1.27] Ref.	.250-.600 [6.35-15.24]	.160 [4.06]	54010-4
	.050 [1.27] Ref.	.250-.600 [6.35-15.24]	.250 [6.35]	54010-1
13	.060 [1.52] Ref.	.375-.725 [9.53-18.42]	.300 [7.62]	54123-1
17	.060 [1.52] Ref.	.400-.875 [10.16-22.22]	.375 [9.52]	54011-1
	.060 [1.52] Ref.	.400-.875 [10.16-22.22]	.375 [9.52]	54011-3
23	.070 [1.78] Ref.	.550-1.250 [13.97-31.75]	.500 [12.70]	54012-1

Thin Wall Boot

Material

Inter Sleeve – Nylon

Outer Tubing – Polyolefin

Expanded Wall Thickness – .020 [0.51]

Max. Recovered Wall Thickness – .040 [10.16]

Sealing Range – .250 [6.35]–.500 [12.70] Dia.



Shell Size 17
Part No. [213933-1](#)

Note: All part numbers are RoHS Compliant.

Dimensions are in inches and millimeters unless otherwise specified. Values in brackets are metric equivalents. Dimensions are shown for reference purposes only. Specifications subject to change.

Connect With Us

We make it easy to connect with our experts and are ready to provide all the support you need.

Visit te.com/support to chat with a Product Information Specialist.

te.com/circular-plastic-connectors

TE, TE Connectivity and TE connectivity (logo) are trademarks owned or licensed by the TE Connectivity plc family of companies. Other product names, logos, and company names mentioned herein may be trademarks of their respective owners.

The information given herein, including drawings, illustrations and schematics which are intended for illustration purposes only, is believed to be reliable. However, TE Connectivity makes no warranties as to its accuracy or completeness and disclaims any liability in connection with its use. TE reserves the right to make any adjustments to the information contained herein at any time without notice. TE expressly disclaims all implied warranties regarding the information contained herein, including, but not limited to, any implied warranties of merchantability or fitness for a particular purpose. TE Connectivity's obligations shall only be as set forth in TE Connectivity's Standard Terms and Conditions of Sale for this product and in no case will TE Connectivity be liable for any incidental, indirect or consequential damages arising out of the sale, resale, use or misuse of the product. Users of TE Connectivity products should make their own evaluation to determine the suitability of each such product for the specific application. TE is a component manufacturer, and customer and/or end-user is responsible for all end-use compliance and regulatory requirements.

© 2025 TE Connectivity. All Rights Reserved.

9-1773984-4 08/25